

# Kstar GreenFlow DC Charger

## TCU and Monitoring Board Upgrade Guide

Applicable to DC charger(**delivered before Mar. 2026**): CDA12D, CDA12DH, CDA12DS, CDA16D, CAD16DH, CDA16DS, CDA18D, CDA18DH, CDA24D, CDA24DH, CDA30DL, CDA30D, CDA30DS, CDA32DL, CDA32D, CDA32DS, CDA36DL, CDA36D, CDA36DS, CDA40DL, CDA40D, CDA40DS, CDA48D, CDA48D

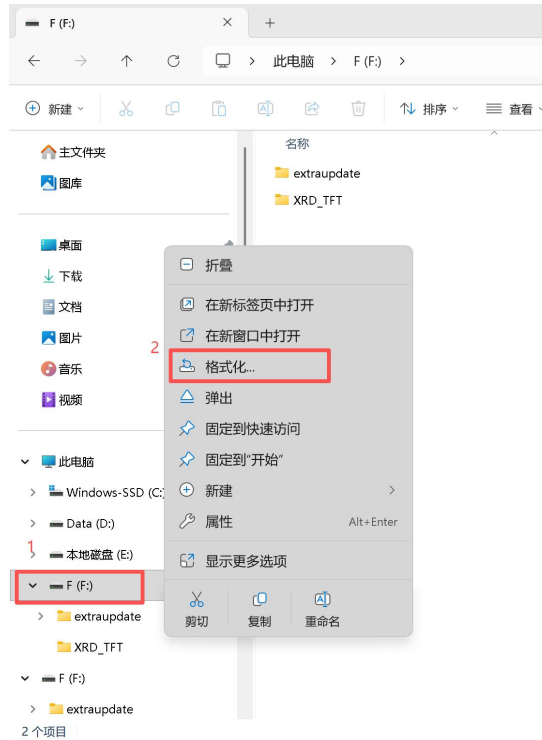
---

1 Preparation .....	3
2 TCU upgrade steps .....	4
3 Monitoring board upgrade steps .....	5
4 Check Version Number .....	7

# 1 Preparation

1) Insert the prepared USB flash drive into the laptop, and select "Format".

Note: Due to the computer's system language settings, the operation interface is shown in Chinese for demonstration purposes.



2) The USB flash drive must be formatted as FAT32, and its capacity should not exceed 32 GB (pay attention to the file system and allocation unit size).

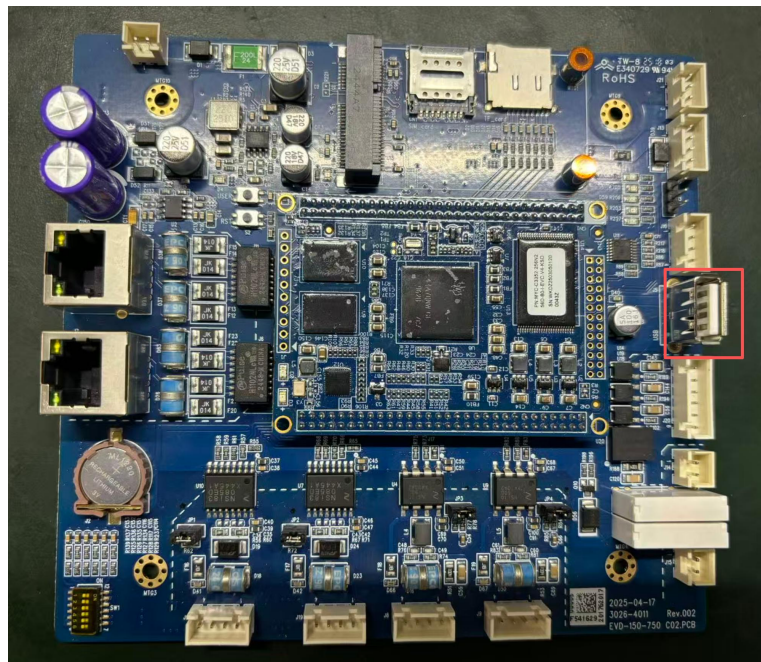


3) Place the TCU upgrade package and the screen upgrade package into a properly formatted USB drive.

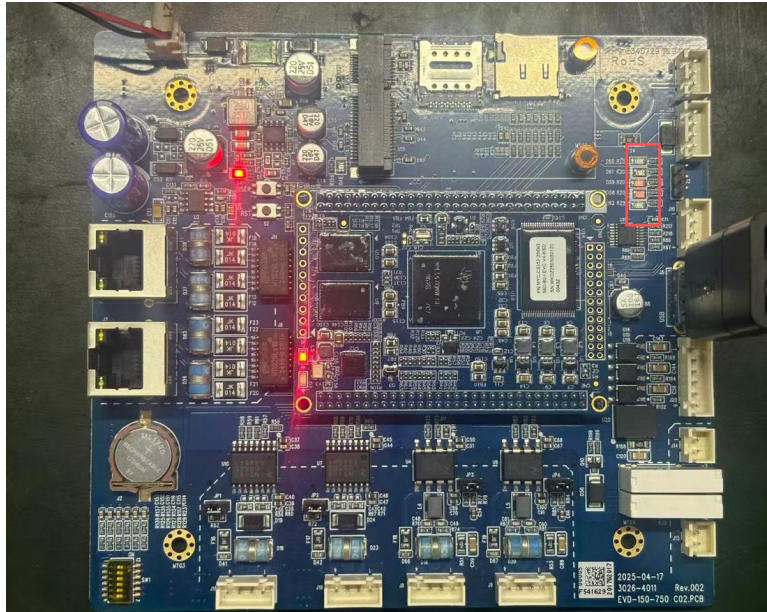


## 2 TCU upgrade steps

1) Power the DC charger first, then insert the USB drive into the monitoring board's USB port for automatic upgrade (the position is marked in the following picture).



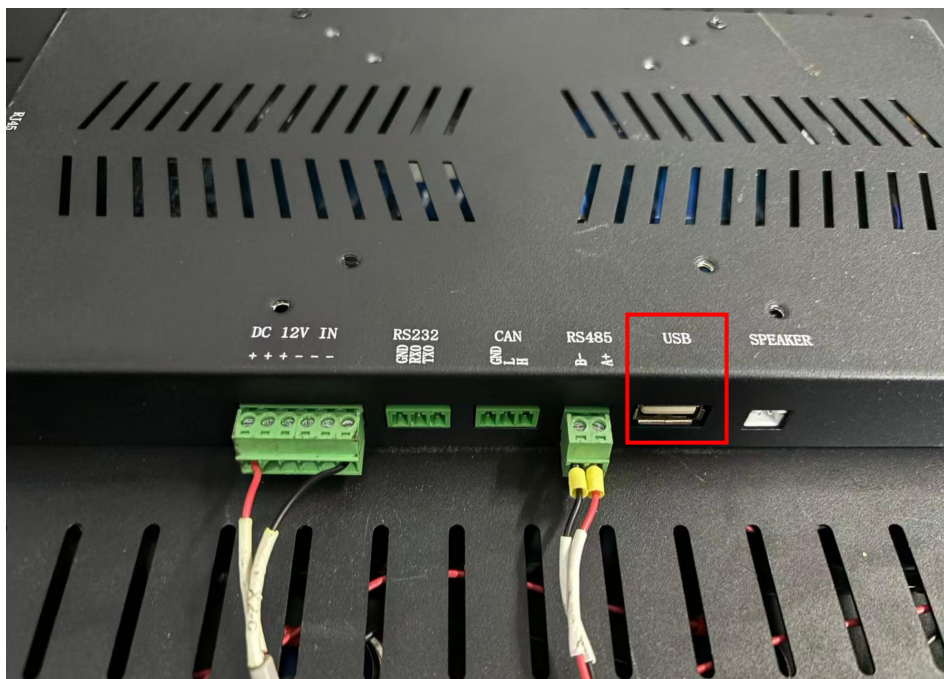
2) Observe the D62 light (the position is marked in the following picture): after it turns off and then on again, wait 2–3 minutes; the upgrade is then complete. If there is no response, please restart the monitoring board while keeping the USB drive inserted.



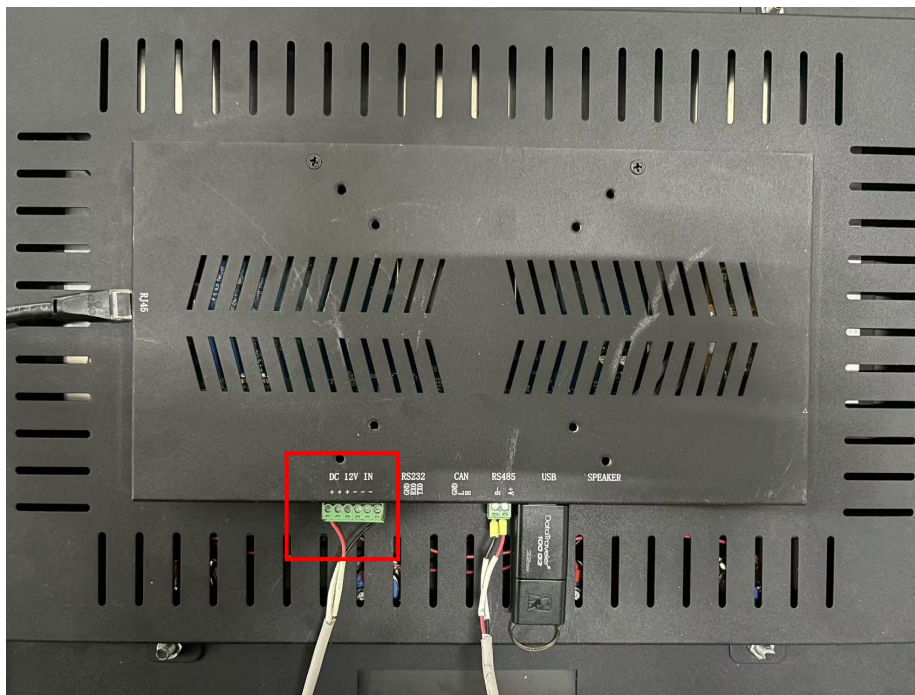
3) After the upgrade is complete, remove the USB drive.

### 3 Monitoring board upgrade steps

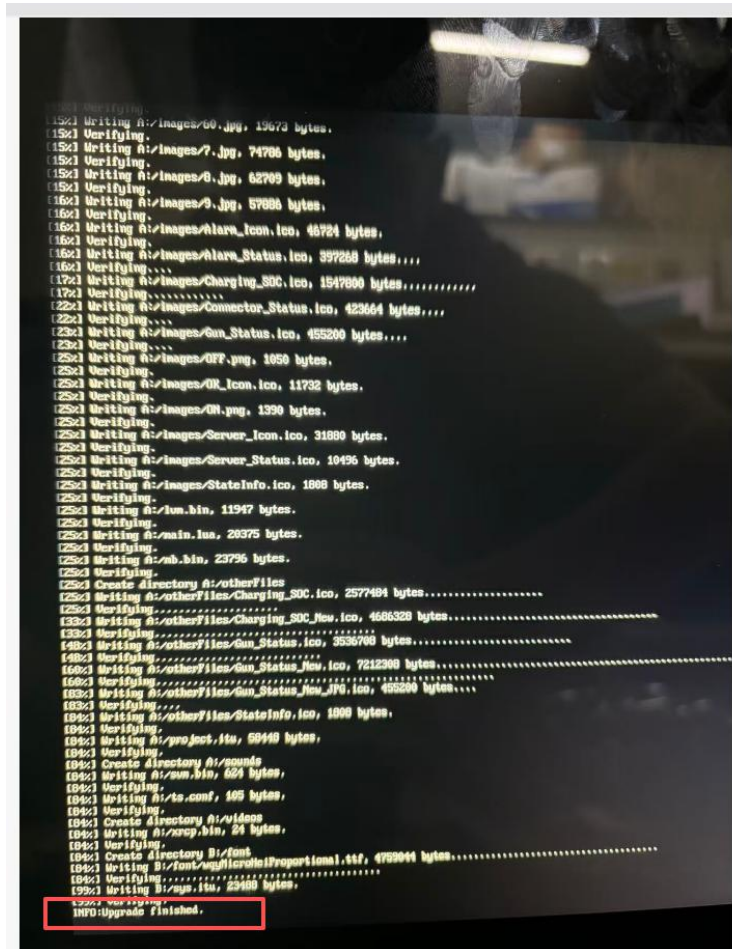
1) Power the charger first, then insert the USB drive into the monitoring board's USB port for automatic upgrade.



2) Remove the 12V  $\pm$  power supply terminal and insert it again; this step restarts the monitoring board.



3) The monitoring board will automatically start upgrading. During the upgrade process, progress will be displayed; the prompt "Upgrade finished" indicates that the upgrade is complete



- 4) Remove the USB drive, then unplug and re-plug the 12V +/- power terminal once.

## 4 Check Version Number

When checking the version numbers of the upgraded TCU and screen, please refer to the upgrade date as the standard, because the version numbers are not fixed.

Red box in the first row: TCU displays version number, version information, and upgrade date.

Blue box in the second row: Screen displays version number, version information, and upgrade date.

